

Contents

Church beliefs.....	2
Gospel beliefs.....	2
A medical case.....	2
Marriage in heaven.....	3
The timing of birth.....	4
Healing.....	5
The star.....	6
The magi.....	7
The birth.....	7
Safety copies.....	10
Sets of investigations.....	10
Lung cancer.....	11
Jesus' ailments.....	13
Conclusions.....	14

Church beliefs

According to the Catholic Encyclopedia, 'From the start the Christian Church strongly opposed the false teachings of astrology. The Fathers energetically demanded the expulsion of the Chaldeans who did so much harm to the State and the citizens by employing a fantastic mysticism... which, with its fatalistic tendencies, created difficulties in the discernment of right and wrong and weakened the moral foundations of all human conduct... The earthly labours of the Saviour purified this noxious atmosphere. The New Testament is the opponent of astrology... The lower the Jewish nation sank in the scale of religion and civilization the greater was the power gained by the erratic doctrines of astrology and the accompanying belief in demonology.'¹

According to Christian apologetics, 'Astrology is based on the magical belief that one's birth time and birth place reflect that person's character, lessons in life, challenges and spiritual path. Most astrologers, like all occultists, believe that since the universe is connected by a mystical force into a supernatural oneness, our intimate journeys can be read in external factors, such as the planets... Since the astrologer is engaging in the occult, the door opens wide for supernatural guidance not from God... Astrology cannot be combined with Christian belief in any way.'²

These claims can be checked by turning to the gospels.

Gospel beliefs

A medical case

The aims of a book are announced in the introduction, so the same may be true of the gospels, but which of them was meant to be read first? Being offered in the form of a biography, they should be read in chronological order. Events up to Jesus' birth are dealt with mainly by Luqas, his birth and childhood by Mateus, his life and sayings by Ioannes, and his crucifixion by Marqus. The sequence begins with Luqas (**Leo, Aquila, Aquarius, Taurus**), who turns to his colleague Teovilus (**Taurus, Leo, Aquila, Aquarius**), to report on Jesus' life according to 'eyewitnesses and servants of the word'.

Luqas is an eyewitness in standing first and foremost for Leo, the sign of the sun, which was thought to regulate eyes, and both he and Teovilus are servants of the word, as shown by the wordplay underlying their names. Both are plainly astrologers, and according to Colossians (4:14) Luqas is also a medic, so the gospels are a case history of Jesus presented for discussion by one medical astrologer to another.

This can be confirmed by going into more detail. The notion underlying medical astrology is that planets regulate organs in the sense of causing cells to specialize, so if two planets move into

1 Catholic Encyclopedia, Astrology. The Encyclopedia Press, New York, 1917

2 Montenegro, M. Astrology: What it really is. www.apologeticsindex.org/a05.html, 2015

conjunction, the regulation becomes ambiguous and the tallying organs change. If the New Testament is a handbook on medical astrology, it should also allude to combinations.

Indeed the next gospel is by Mateus (**Marte**, Aquarius), who begins by alluding to the 42 generations leading to Jesus.³ This is the number of possible pairs of 7 planets, since each is able to pair with 6 others, yielding $7*6 = 42$ pairs altogether, as long as the sequence matters, and a-b is taken to differ from b-a.

Luqas, however, lists more than seventy generations,⁴ 72 of which are accepted by the church father Irenaeus.⁵ $72 = 9*8$, so the disagreement is only about the number of planets, not about the principle of pairing or generation. Like Indian astrologers, Luqas has included the moon-nodes, the two points at which the moon crosses the ecliptic, as if it were then sensed more clearly.

The number of aeons listed by Valentinus, a candidate for the bishopric of Rome,⁶ is 30, which is $6*5$, so again the same principle holds. The aeons are said to reproduce sexually so were likewise thought to pair.

The number of planets taken as the basis of the calculation are respectively 6, 7 and 9, so why is the number 8 missing? This can hardly be due to an oversight, since this was the number of planets alluded to in Khmun in Egypt as the ogdoad and arranged in the form of 4 pairs, as shown by the names:

Nu	Naunet
Amun	Amaunet
Kuk	Kauket
Huh	Hauhet

Each pair was made up of one male and one female, so the notion of planets pairing and generating went a long way back. The ogdoad was taken up by the gnostics and Valentinus, but the latter were then dismissed as heretics, as if the number had unwanted associations. But if planets were thought to be sensed, how?

Marriage in heaven

The first planet to rise after birth was thought to tally with a child's temperament, as if cells were able to sense planets and use them as timers. This they could do by reacting to atmospheric waves, which are waves in the atmosphere. Some are due to bolts of lightning but others are based on a frequency of one cycle in 24 hours, as if due to the rising and setting of planets. The first harmonics are 24, 12, 8 and 6 hours long, so if one planet rises 12 hours after another, their 12-hour waves are in phase and the planets are sensed as two *aspects* of a single series of waves. Hence in astrology two planets in combination are said to be in aspect.

Such waves are continuous like waves round a pope's tiara, which in Byzantine days was known as

3 Mat. 1, 01-16

4 Luk. 3, 33-38

5 Irenaeus. Adversus haereses, Ch. 22, para. 3: 'Wherefore Luqas points out that the pedigree which traces the generation of our Lord back to Adam contains seventy-two generations, connecting the end with the beginning...'

6 Terullian. Adversus Valentinianos 4

the phrygium, so on the one hand they were basic to astrology and on the other hand were associated with Phrygia, a region formerly favored by Neanderthals. Indeed Phrygian caps worn by the doges of Venice were high at the rear like neanderthal heads, as if Neanderthals too had been seafaring and turned to the stars for use in navigation.

Like mammoths they had been shaggy as protection against the cold and been known in Europe as Pan and the satyrs and in Asia as the Pandavas or Pan and the divas, a set of brothers sharing a wife. The aim of this form of marriage, known as polyandry, was to lower the rate of reproduction to a replacement rate, to avoid starvation or warfare, given no mass immigration. Just as planets may be linked by a shared series of waves, brothers were linked by a shared wife.

Aware of this background, the Sadducees (tzedoqim or sea-dogs) ask Jesus. "If a woman is married in turn to each of seven brothers, to whom will she be married on rising again?" If Jesus is well informed, he will see no problem. She can marry all at once like Snow-White the seven dwarfs. But the question is also astrological, as Jesus appreciates: 'At their next rising they will neither wed nor be wed but be like the archangels (arc-angles) in heaven.' (Mat. 22:30) He seems to be implying that planets are always sensed as separate, never as blending.

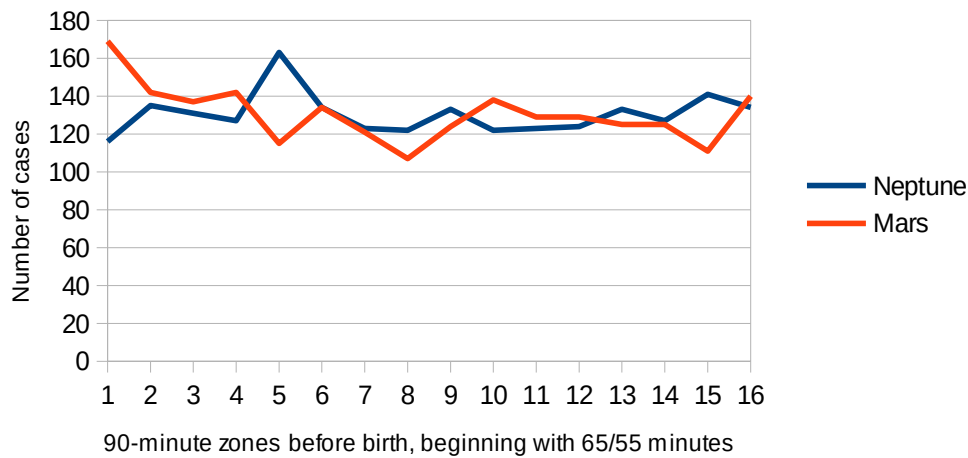
How they are sensed can be checked empirically in terms of the timing of birth. If the planet timing birth happens to be sensed as blending with another, the child's temperament or range of abilities should change accordingly.

The timing of birth

Michel Gauquelin and his wife Françoise claimed that eminent sportsmen are often born when Mars is rising so have the tallying temperament. This can be checked with data from the first half of their Book of American Charts. Use of a scale of regular intervals shows that sportsmen were often born not only when Mars was rising but also at regular 6-hour intervals later. The same is true of Neptune except that, if rising, Mars was most often about 65 minutes above the horizon, whereas Neptune was most often about 145 minutes above it. The difference may be due to the time needed for sensing and identifying the respective atmospherics.

Since Mars and Neptune were neither in conjunction nor 12 or 6 hours apart, births must have been due to the one or the other but not to a blend of both. These findings were sent in the mid 90s to the Astrological Association of Great Britain, which wished to check them, but in doing so, replaced the data from the USA with the original data from France. Here are the results on a joint scale.

The rising of Mars & Neptune at the births of 2088 French sportsmen



The effect is slight but clear. The slightness may be due to the fact that two thousand sportsmen from only a single land cannot all be outstanding and have the ideal temperament, so using so many data is like adding a liter of water to an espresso.

Neptune often rose about 6 hours before Mars but not the other way round, so Luqas and Mateus are right to imply that the sequence matters – that a-b is not the same as b-a. Apparently the US sportsmen had inherited leanings towards Mars and Neptune, whichever they chose as a timer, whereas the French had a leaning only towards Mars but could acquire one towards Neptune if these planets were sensed as blending at birth, so indeed there is marriage in heaven. A similar, greater effect can be found with other planets in the case of other professions, but the 'Mars effect' has been used as an illustration on account of its historical interest.

This also confirms that astrology involved no belief that 'the universe is connected by a mystical force into a supernatural oneness', since Mars and Neptune were effectively 6 hours apart only as sensed from the latitudes of birth, so astrology involves sensing. Moreover, the counterpoint on the graph reveals a notable lack of conjunctions, as if if a complete blend were too much of a good thing.

Healing

Since the gospels are about medical astrology, the inclusion of healing as well is hardly surprising, but how reliable are the reports of Jesus' healing? His life-cycle consists of one circuit of the zodiac, but each evangelist, standing for one of the four main signs, can look back on only one of the four phases of his life. The one able to look back on Jesus' life as a grown-up is Ioannes. The numbers of wonders mentioned in each gospel, according to the website 'God is Real', are:

Luqas	Mateus	Ioannes	Marqus
21	22	8	20

There is no significant difference in the numbers of wonders mentioned by Luqas and Mateus or by Marqus tongue in cheek, but less than half as many are mentioned by Ioannes and only half of these

involve healing:

- 1) the healing of an official's son of fever
- 2) the healing of an invalid at Bethesda
- 3) the healing of a man born blind
- 4) the raising of Lasarus from the dead

As regards (1) Ioannes stands at the end of the axis leading from Leo to Aquarius – from summer to winter – so, in the sense that one season gives birth to the next, the official in Aquarius has given birth to a son in Leo. His son is suffering from the heat of summer but is cooled by Jesus at the start of winter.

As regards (2) the healing takes place on a Saturday, which tallies with winter in the year, so the invalid is waiting for the water in a pool to thaw, then he too will be able to move.

As regards (3) winter is due to the lessening of daylight hours, so the man is unable to see and is likewise waiting for the solstice to pass.

As regards (4) Lasarus (**Leo, Aquila, Aquarius, Taurus**) is Luqas (**Leo, Aquila, Aquarius, Taurus**) in the off-season, revived by the nearing of spring.

These are no ailments due to planets sensed as blending but only seasonal changes. Ioannes stands first and foremost for the winter solstice, so he reports on cooling, stiffness, blindness and hibernation. The distant healing of the official's son implies that healing was thought to be due to attunement, not to an infusion of energy from the healer, since energy flows from a hot to a cold body, not the other way round.

Due to the season, Jesus can also walk on water, and on coming ashore in the three synoptic gospels, he finds himself back in the ice-ages and is greeted by a man called Legion who, as strong as a Neanderthal, emerges from one of the tombs and is suffering from dissociative identity disorder. If he were treated though attunement, he might notably improve but only at the cost of the healer. He tunes in not to Jesus but a herd of pigs, who accordingly go crazy and kill themselves, while he improves. Is he trying to tell Jesus that he is likewise multiple so unsuitable as a healer? Did planets likewise blend at Jesus' birth?

The star

Since Jesus stood for the trinity, his birth must have been timed by one member of the trinity in conjunction with the other two. Each member of the trinity was a possible source of the system of planets, since these may have erupted from an orb now left at the hub, be it the earth (clod/god) or sun, or have evolved from a spiral nebula (holy spirit). The earth is no part of astrology, but its partner, the moon, is, so the 'star' must have been made up of the moon and sun and the orb on the system's rim. A conjunction of the moon and sun is also an occultation, seen as full from only a small region, so magi could work out where then travel there. If the region was only thinly populated, only one child may be been born at the time. But who were the magi?

The magi

The magi appear in the zodiac in the form of creatures human or half-human – the horse-man Sagittarius, the goat-man Capricorn and the can-man Aquarius. Aquarius appears in the Chinese version as a monkey, who in India appears as the can-man and canoe-man Hanuman bearing a cone of herbs. The herbs typify him as a herbalist and the cone as an astronomer, since cross-sections of a cone are ellipses, and planets move in ellipses round the sun.

The magi are led to Jesus by following his star in the period from its rising to culmination so are heading east from the shore of the Mediterranean, where they seem to have landed. Indeed, they bring gold, and 'gold, in the west of Europe, was to be found in Spain and Portugal, south-western France and Brittany, and in certain parts of Britain but most of all in Ireland, mainly in the stream sands of the Wicklow hills.'⁷

In the Adoration of the Magi by Gentile da Fabriano (1423) there are two monkeys on a camel, in the version by Sassetta (1435) there is a monkey on a donkey, in the version by Benozzo Gozzoli (1459-60) in the Medici Chapel there is a monkey on the west wall, in the version by Jacopo del Sallai (1480s) there is a monkey with a cup in the foreground and in a version by Gaudenzio Ferrari (c.1532-35) a monkey is held by a man on a white horse.

The cone born by Hanuman was also known as the cosmic mountain, the home of the Pandavas or Pan-divas. Pan was a flautist and they were singers, so the seven deadly sin(g)s were their seven lively songs. Indeed, according to computer simulations, Neanderthals may have had a smaller set of sounds than modern humans,⁸ so they may have relied on pitch to differentiate between them further. If so, their conversation may have been more like song.

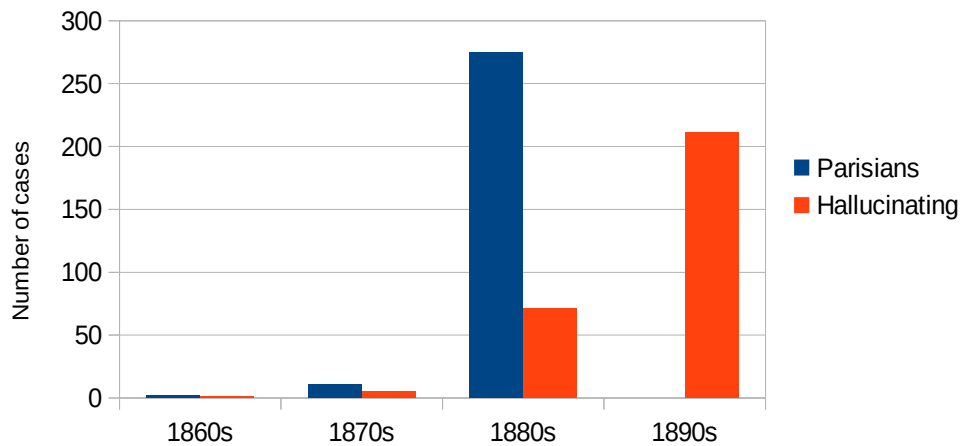
The birth

Why do the magi first see Jesus when the star is overhead, as if he were born not at sunrise but about 6 hours later? The interval between a timer's rising and birth may depend not only on the timer's size and distance but also on the level of solar activity, as shown by data from the Gauquelins. Results for the first 288 data of Parisian parents may be compared with results for the first 288 data of the hallucinating in France. They are from nearly the same period but not quite.

7 Hawkes, Christopher. Gold Ear-rings of the Bronze Age, East and West. *Folklore*, Vol. 72, Issue 3, 1961, p. 438

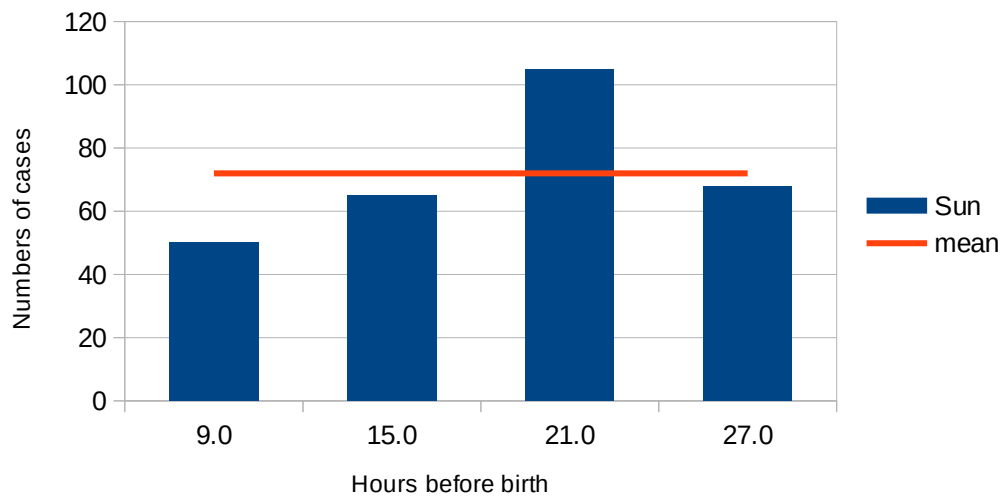
8 Research by Robert McCarthy at Florida Atlantic University, made known by the university on 21 04 2008

The first 288 data of Parisians and the first 288 data of the Hallucinating



In the 1880s the greatest number of sunspots was reached in 1883, when the average of the 12 monthly means came to 63.7, and in the 1890s the maximum number was reached in 1893, when the average came to 85.1, so the level of solar activity was rising.⁹ Here are results for the sun in the case of Parisians.

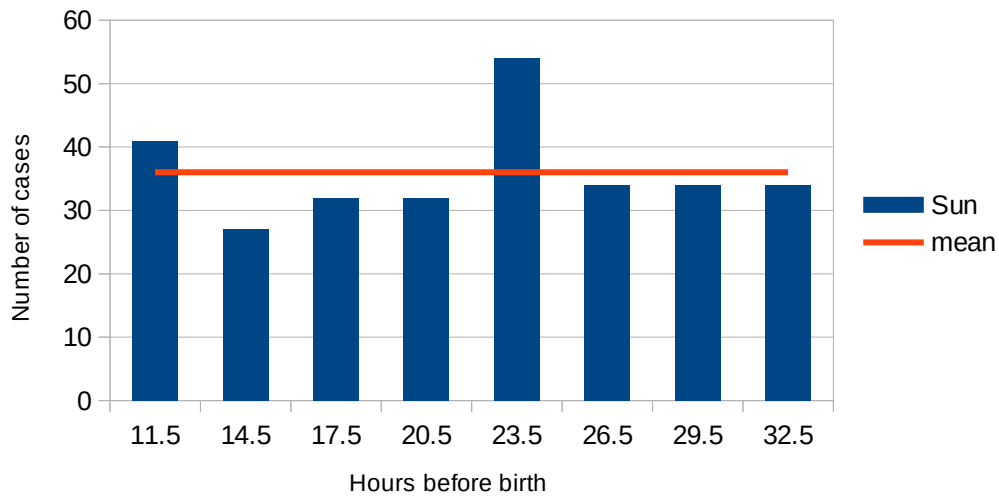
The sun's rising at the births of 288 Parisians (1866-1890)



The results are highly significant. Here are results for the sun in the case of the hallucinating.

9 Australian Government Bureau of Meteorology, Yearly Mean Sunspot Numbers, www.ips.gov.au/Educational/2/3/6

The sun's rising at the births of 288 hallucinating (1867-1899)

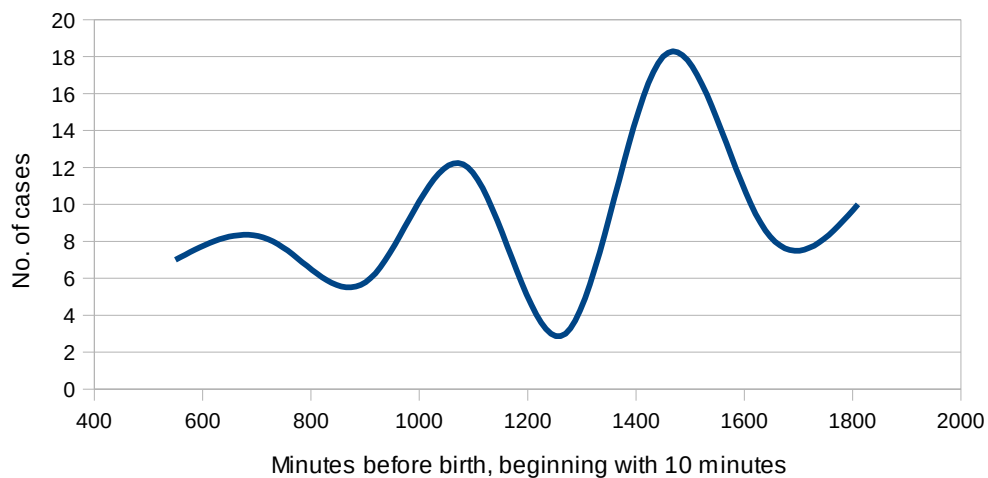


The two main changes are:

- 1) The 24-hour wave is in the process of breaking up into two 12-hour waves, which are the 1st octave.
- 2) The lag between sunrise and birth has changed from -3.0 hours to -0.5 hours. The negative sign shows that births occurred not after rising, as in the case of Mars and Neptune, but before it.

The results imply that an increase in solar activity creates more turbulence, so on the one hand waves tend to break up, as on a lake on a windy day, and on the other hand they become harder to identify, so cells need a longer exposure and birth occurs later. This interpretation is also in line with my results for classical composers in the wider sense of the word, whose names were taken from lists in the Wikipedia and whose data were taken from www.astro.com:

The sun's rising at the birth of classical composers



- 1) The 24-hour wave has broken up further into four 6-hour waves, which are the 2nd octave, as if the average level of solar activity were higher than in the 1890s.
- 2) The lag has increased by a further 0.5 hours.

These changes imply on the one hand that births were not due to the sun's visible rising and on the other that the times of birth were not faked by parents according to astrological preconceptions, to make them more auspicious, since there was no tallying change in preconceptions.

If Jesus was born at noon, the waves must have been 6 hours long, and the level of solar activity high. A high level of activity is found to tally with ailments such as Alzheimer's, breast and colon cancer, congenital anomalies, sclerosis, giant cell arteritis and rheumatoid arthritis,¹⁰ so at Jesus' birth not only the conjunction of the sun, moon and outermost planet but also the level of solar activity implies that his health in later life was poor and well worth Dr. Luqas' and Teovilus' attention. But why should conditions at birth have lasting effects?

Safety copies

If planets in combination are sensed as a hybrid planet, organisms and organs may become hybrid too. This proved to be useful in the case of French sportsmen but only within limits, as shown by the lack of conjunctions. In other words, variety is the spice of life but also a source of ailments, so a device is needed to moderate the effect. This was thought to consist in the following: If planet A is in conjunction with star Z at birth, cells react for the rest of a lifetime to A and Z in the same way, as if the star were a safety-copy, but if two planets happen to combine at birth, the effect is lasting and may lead to a chronic ailment. This notion may be checked by looking for correlations between ailments and blends of planets at birth.

Sets of investigations

Data may be taken from websites of celebrities like the 'Political Graveyard' and 'NNDB', where causes of death are given. A correlation may be sought between deaths of lung cancer and a conjunction of planets, since lung cancer may be due partly to the state of the immune system. Data must be chosen from a long enough period to let planets move into and out of conjunction several times or they may be in conjunction by coincidence for much of the period. To ensure that the period need not be too long, conjunctions may be sought between the sun and outer planets, since the sun is relatively fast as sensed from the earth.

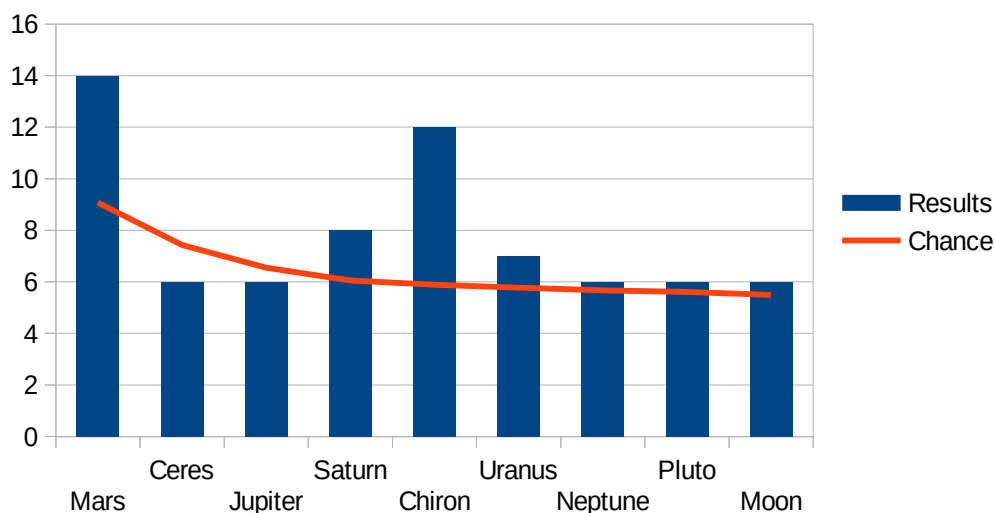
¹⁰ Alvarez, S.A. Effects of extremely low frequencies on human health, *Advanced Research in Scientific Areas*, Dec. 2012, & Wing S. et al. Do solar cycles influence giant cell arteritis and rheumatoid arthritis incidence? *BMJ Open*, 2015, 5

Lung cancer

We can begin with a pilot study using data from the Political Graveyard except for data also available at NNDB. We thereby have two separate databases without any overlap, one for a pilot study and the other for a control. A conjunction with the sun can be defined as an interval of 2 hours or less on rising. This raises the question of the relevant latitude, since the interval between orbs' rising depends on not only the angle between them on the ecliptic but also the latitude from which they are viewed, and the relevant latitude may be of birth in some cases and of death in others. This makes little difference in the case of conjunctions, so the coordinates 97W00 and 38N00 are used as the US mean in all cases.

Parallax too should be taken into account. Planets in conjunction with the sun are actually beyond it and reappear as the earth moves to one side. The nearer they are to the sun, the longer they linger near it as seen from the earth, so the line showing chance on the graph is curved.

Lung cancer: planets rising within 2 hours of the sun on the day of birth

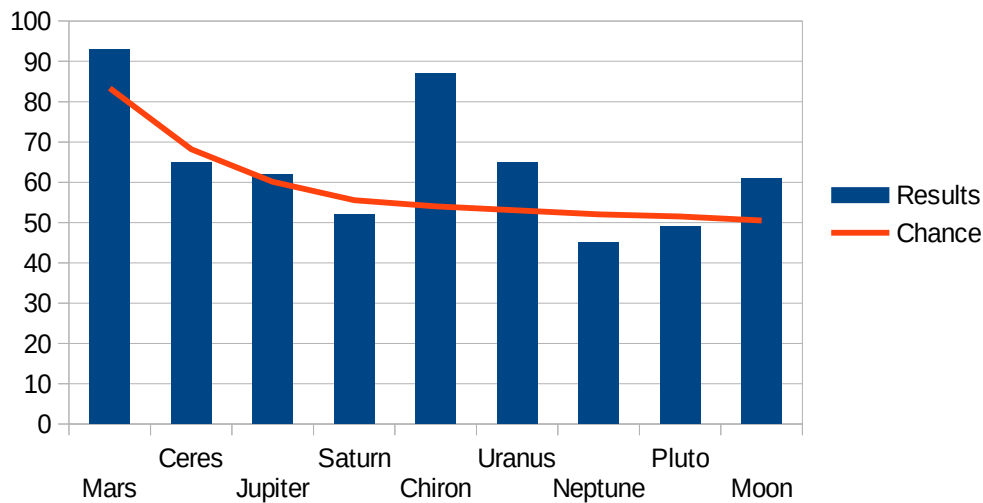


Results are best for Mars and Chiron. The effect sizes, in terms of the actual number of conjunctions divided by the chance number are:

Mars	1.54
Chiron	2.04

Here are the results for the much bigger database at NNDB.

Lung cancer: planets rising within 2 hours of the sun on the day of birth

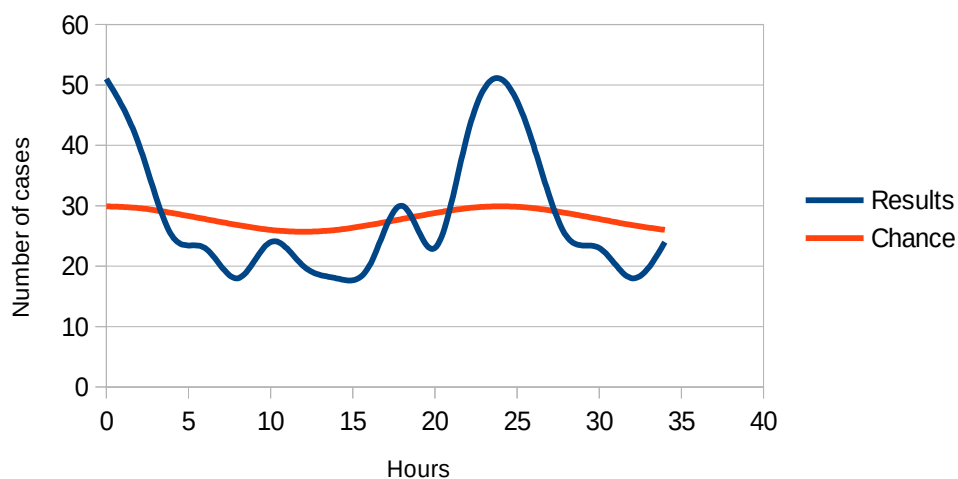


The effect sizes for the same two planets are now:

Mars	1.17
Chiron	1.61

The effect for Chiron is still big and, owing to the greater number of data, more significant. Results for conjunctions with the innermost planet Mercury, not the sun, are slightly less significant, as if the sun were the relevant orb. The effect for the sun and Chiron can be viewed in more detail by recording how often Chiron rose not only within 2 hours of the sun but also at other intervals.

Deaths of lung cancer: Chiron's rising before the sun on the day of birth

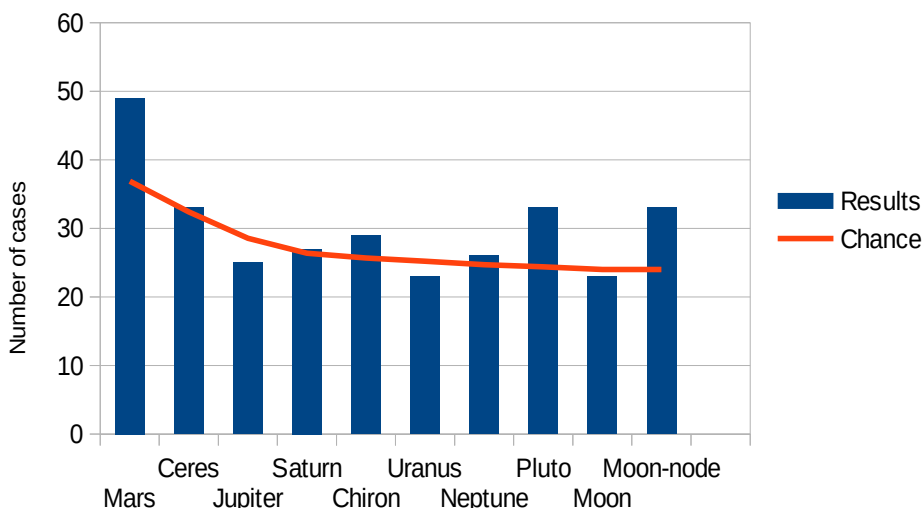


There is one main crest, showing the conjunction, and a smaller one 6 hours later. The likelihood of the effect can be measured by applying the chi-test to the 6-hour crest and the 6-hour trough. The intermediate sections are not relevant, since even if a genuine wave is present, it should not be evident there. The likelihood or 'p-value' of the results is 0.000000434 – less than 1 in a million.

There remains the possibility that the data are biased in the sense that more births occurred in a certain season when Chiron was near the sun for several years on end as sensed from the earth. This

can be checked by taking data in merely alphabetical order from the two databases. The sample used below is made up of the first 96 data from NNDB, beginning with 'A', and of the first 48 data from the Political Graveyard, beginning with 'B'. With altogether 144 data, the sample is half as big as the one used above.

Planets' rising within 2 hours of the sun on the day of birth: random sample



The sizes of the main effects are:

Pluto	1.38
Moon-node	1.35
Mars	1.33
Chiron	1.13

The effect for Chiron is insignificant, though the randomly chosen data may even include deaths of cancer.

Jesus' ailments

Jesus may have had problems with his sinovial fluids (moon), eyes (sun) and skin (outermost planet), as well as rheumatoid arthritis due to the heightened solar activity at his birth. These ailments are also implied by the magi's gifts of frankincense and myrrh. Frankincense inhibits rheumatoid arthritis¹¹ and bladder cancer¹² and is used in China to treat leprosy,¹³ and myrrh is antimicrobial, improves the healing of wounds and likewise inhibits inflammation.¹⁴ In other words the magi as medical astrologers offered him gifts suited to no spiritual or political leader but a future invalid.

If spiritual healing consists in putting a patient's organs into the same state as a healer's, Jesus

11 Su, S. et al. Frankincense and myrrh suppress inflammation via regulation of the metabolic profiling and the MAPK signalling pathway. *Sci Rep*, 2015

12 Frank, M.B. et al. Frankincense oil derived from *Boswellia carteri* induces tumor cell specific cytotoxicity. *BMC Complement Altern Med*, 2009, 9:6

13 Greenaway, P. *Culinary Herbs, Frankincense*. Tru Divine Publishing, 2013

14 Gebrehiwot, M. et al. Evaluation of the wound healing property of *Commiphora guidotti* Chiov ex. Guid. *BMC Complement Altern Med*. 2015, 282

should not have treated the lame, the blind and the leprous. A conjunction of the sun and moon (mucous membranes) is also thought to cause diarrhea, so he should also have refrained from having a big supper on the eve of his crucifixion, when the sky darkened at noon. The state of his skin is shown in the Isenheim Altarpiece (1506-1515) painted by Matthias Grünewald for the medical monks of Saint Anthony.

Conclusions

To come back to the claims made by in the Catholic Encyclopedia and by the Christian apologetics: At the start the Christian church did not oppose but apply the teachings of astrology, which were neither false nor fantastic but in line with empirical findings and applied in the field of medicine. These created no difficulties in the discernment of right or wrong, since principles were clearly expressed and open to control investigations. The earthly labors of the Savior had no noxious atmosphere to purify, since the relevant atmospheric are otherwise harmless. The New Testament does not oppose but embody astrology, and the veneration of devils and divas is no sign of decadence, Jewish or otherwise, but merely respect due to conscientious researchers.

Astrology is based on no belief that a birth chart is a spiritual agenda but on the belief that planets serve as timers and regulators. This involves no mystical force sustaining a supernatural oneness but only electromagnetic waves and resonance bodies. Astrologers did not engage in the occult but offered transparent reasons for their beliefs and did not open the door wide for supernatural guidance but relied on observations and calculations. Astrology can be combined with evangelical belief in every way and offers key insights into lung cancer and other ailments.